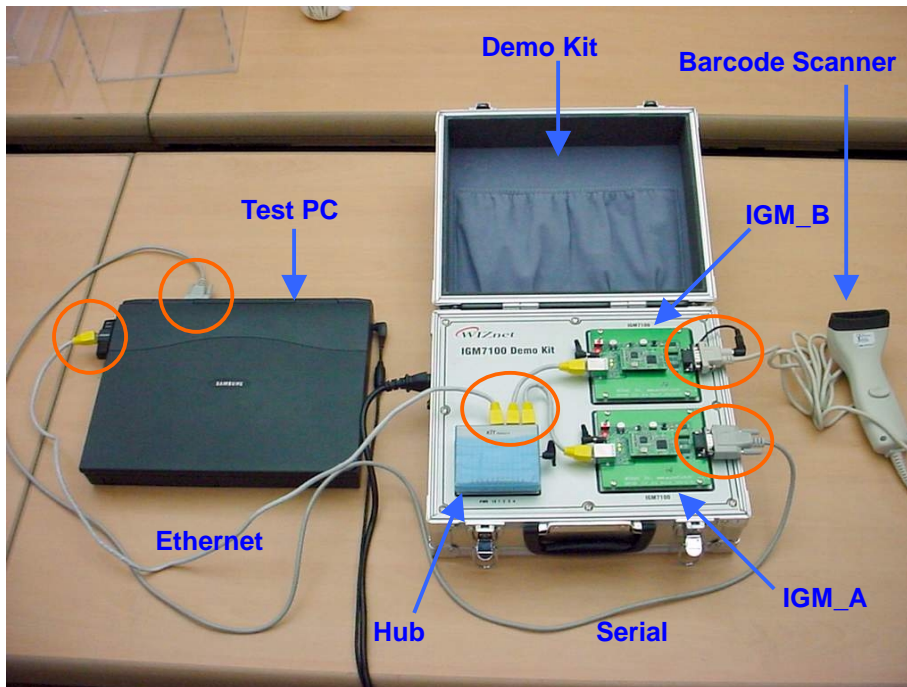
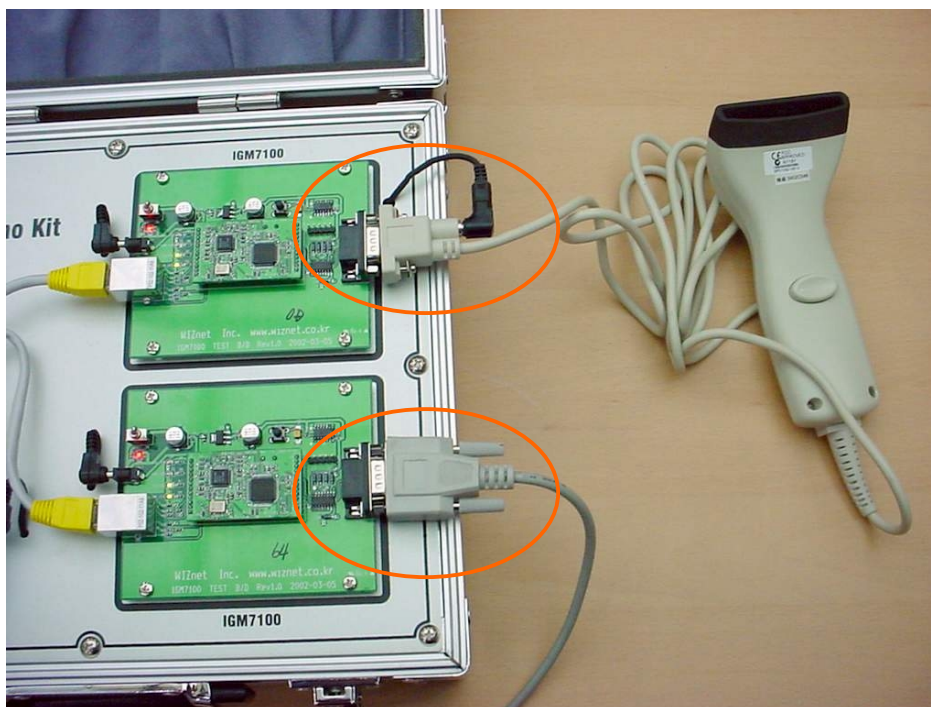


IGM7100 Trouble Shooting Guide

■ System Configuration and Basic Check Point



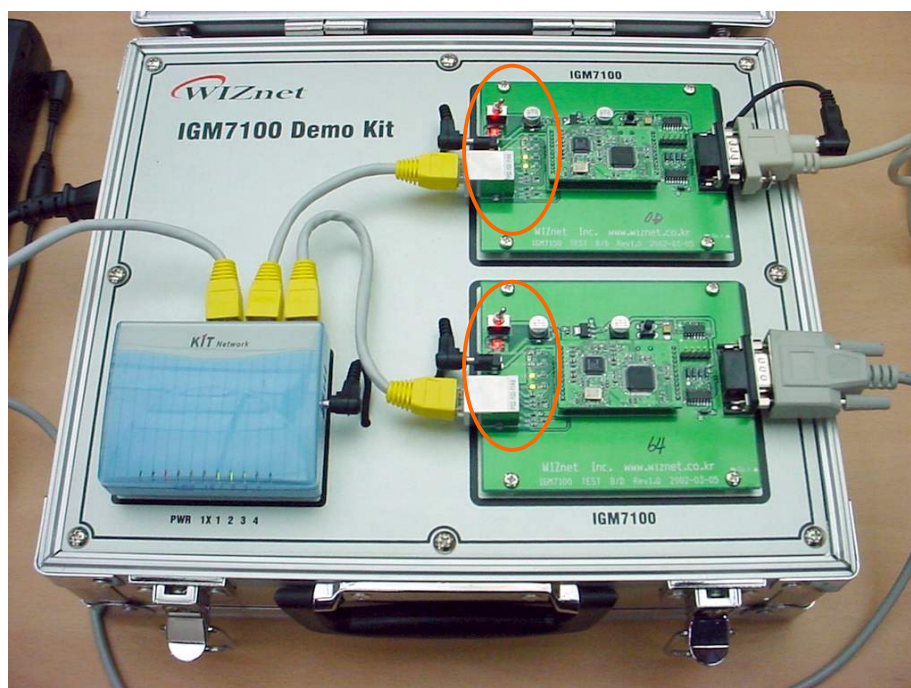
Be sure to connect UTP (Ethernet) Cable between Hub and Test PC. And also connect serial cable between IGM_A and Test PC.



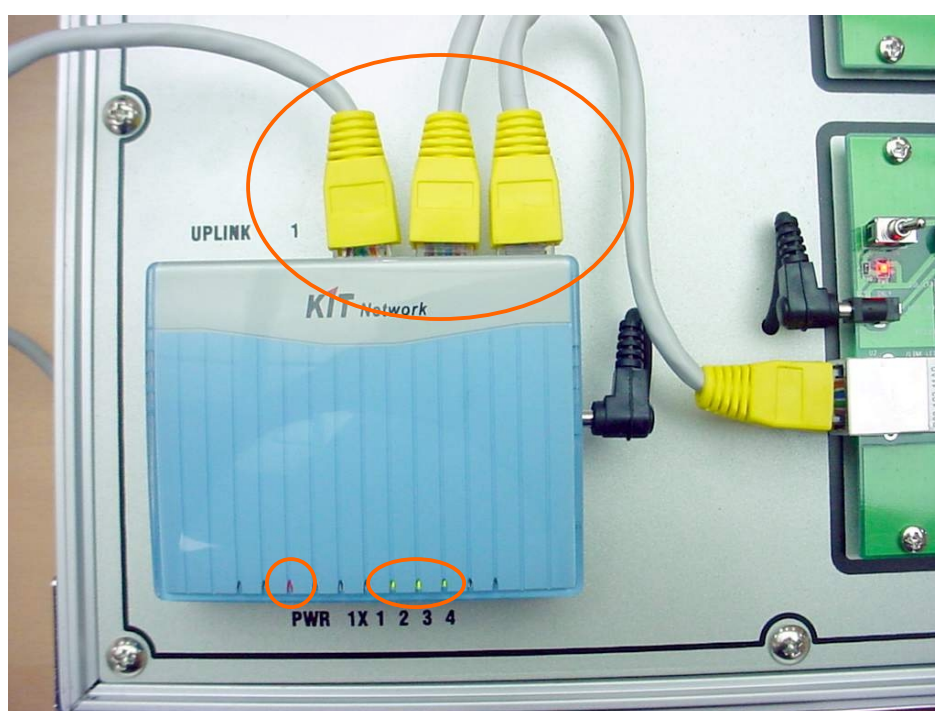
Be sure to connect power cable to barcode scanner. And turn on the power of demo kit (Be sure that the demo kit requires 220V input) and power of two IGM7100.

WIZnet is RAPID(Reusable Application-specific Intellectual Property Developer)!

IGM7100 Trouble Shooting Guide



Be sure that LEDs on boards are ON (Power, Link, 10Mbps).



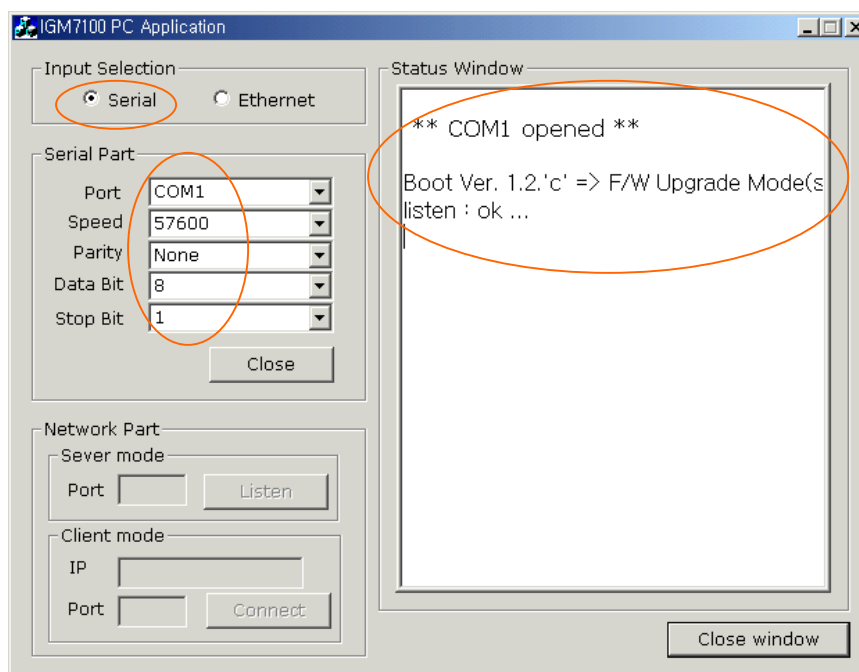
Be sure to connect UTP cable which is connected Test PC to hub's 1 or 2, not uplink. And also be sure to LEDs of Hub are ON (PWR, 2,3,4). LED2 is for Test PC. LED3 is for IGM_B. LED4 is for IGM_A.

WIZnet is RAPID(Reusable Application-specific Intellectual Property Developer)!

IGM7100 Trouble Shooting Guide



- To diagnose whether IGM_A's firmware is working correctly,
 - ① Run IGM_PCutil.exe from the Test PC. And from Input Selection, select "**Serial**".
 - ② Under Serial Part, select **COM1** for Port, Set Speed to **9600** for Barcode scanner (default speed is 57600), then click "**Open**".
 - ③ The Boot message from IGM_A will display on Status Window as shown below.



- ④ If the message is not showed up, IGM_A's firmware might be corrupted.
 - ⑤ To diagnose whether IGM_B's firmware is working correctly, connect serial cable which is connected to IGM_A, to IGM_B and follow from above step ① to ④.
- To do Serial mode test and Ethernet mode test, refer to the "IGM7100 Test Program User's Guide".