

IGM7100 Test Program User's Guide



This explains how to use example program (IGM_Cfgtool.exe, IGM_PCutil.exe) to test and verify IGM7100's functions.

1. IGM_Cfgtool.exe

To set up network and serial configuration of IGM7100

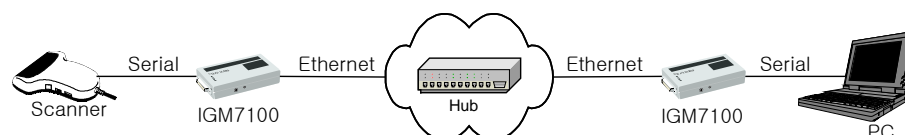
➤ Function

- ① Network Configuration
 - IP address, Subnet mask, Gateway, Port number
- ② Serial Configuration
 - Speed, Parity, Data bit, Stop bit, Flow Control
- ③ Server/Client Mode Setting
 - Server mode, Client mode
- ④ Remote Firmware Upload
 - Firmware upload

2. IGM_PCutil.exe

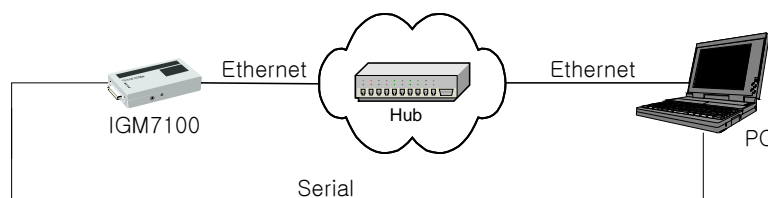
To test and verify Serial-to-Ethernet and Ethernet-to-Serial protocol translation function of IGM7100. Two modes (Serial / Ethernet Mode) are available.

➤ Serial Mode Test



- ① Two IGM7100 are required
- ② There's no need for changing existing software program

➤ Ethernet Mode Test



- ① One IGM7100 is used

WIZnet is RAPID(Reusable Application-specific Intellectual Property Developer)!

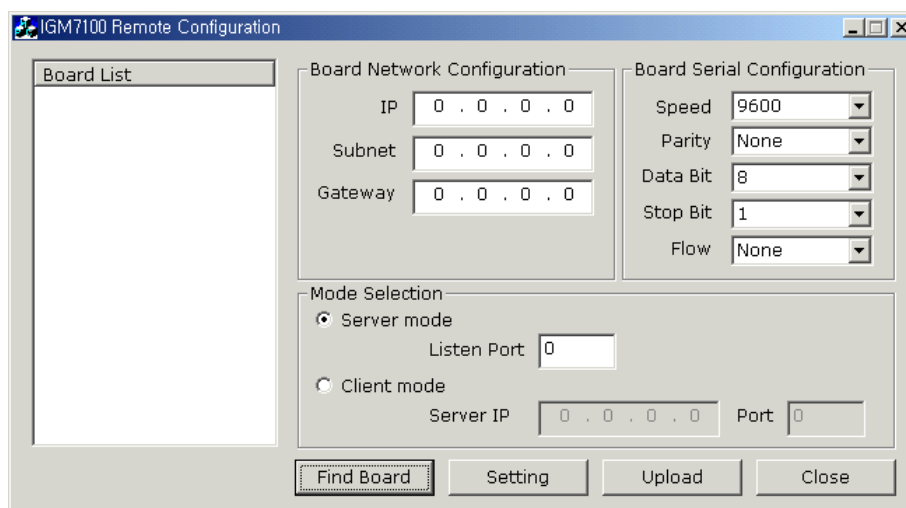
IGM7100 Test Program User's Guide



1. IGM_Cfgtool.exe

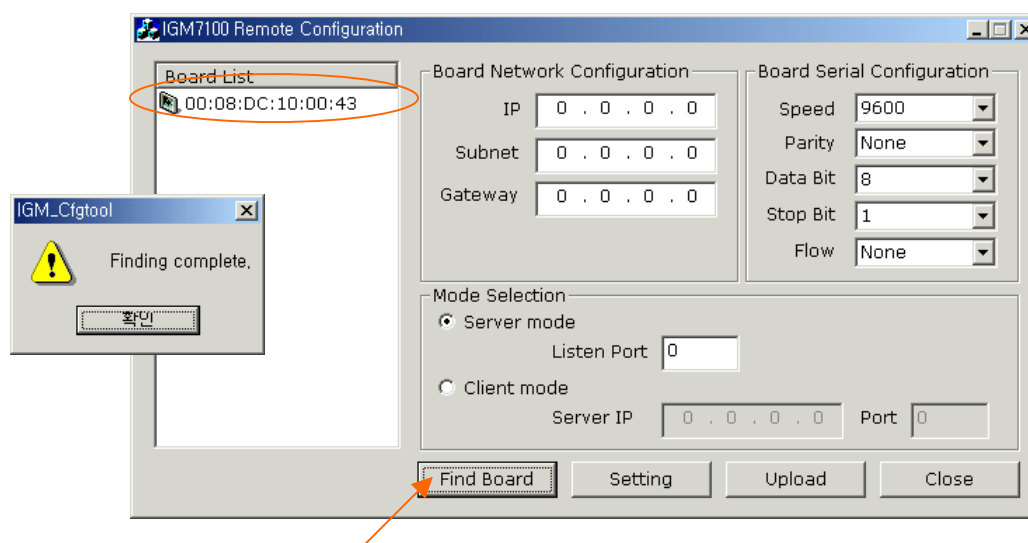
■ Test Procedure

- ① Turn on IGM7100 after connecting to network. (Check the Power LED and the Link LED)
- ② Run IGM_Cfgtool.exe on PC.



■ Find Board

Click "Find Board", then MAC address of IGM7100 found on the network will be shown in "Board List" window.

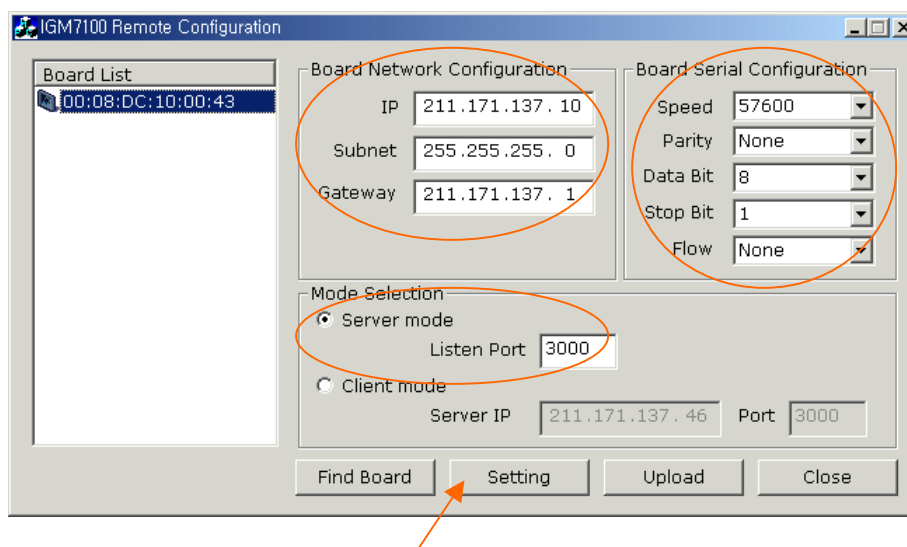


IGM7100 Test Program User's Guide



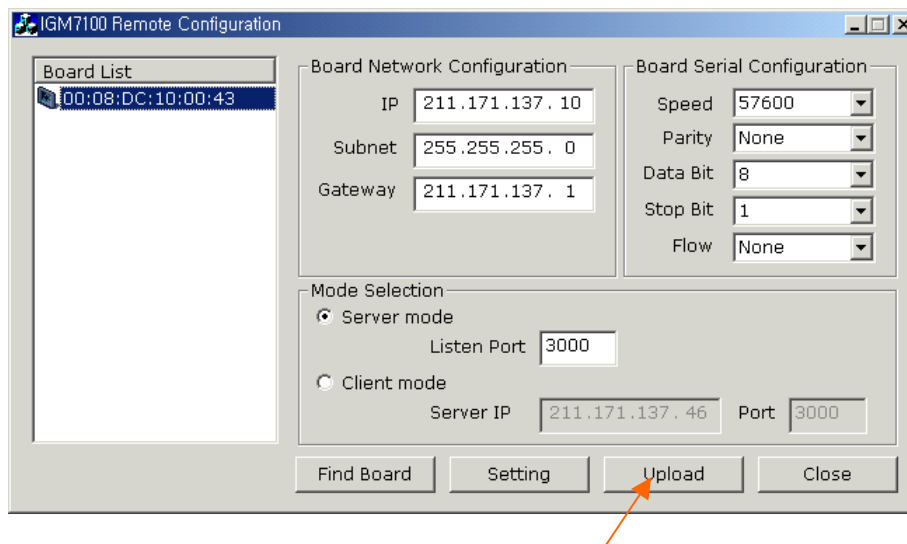
■ Setting

To set up network and serial configuration, select one MAC address on Board List and input network and serial information. Then, click “Setting” button.



■ Upload

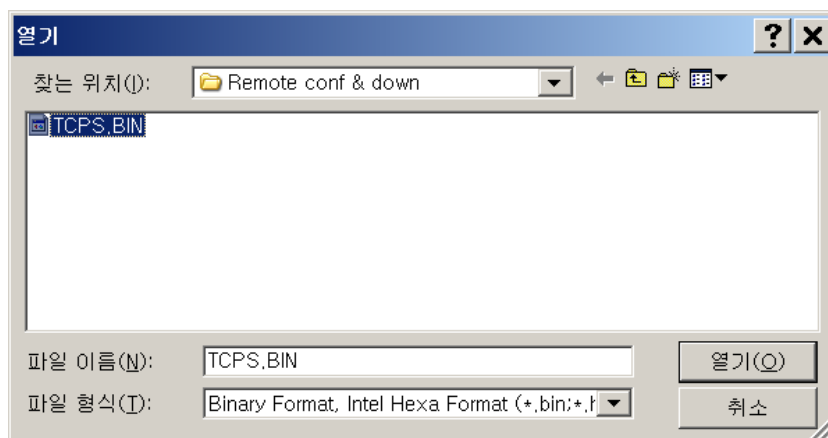
It is possible to upload firmware of IGM7100 through the network remotely by “Upload” button. But, you should convert it to BIN or HEX file format before upload.



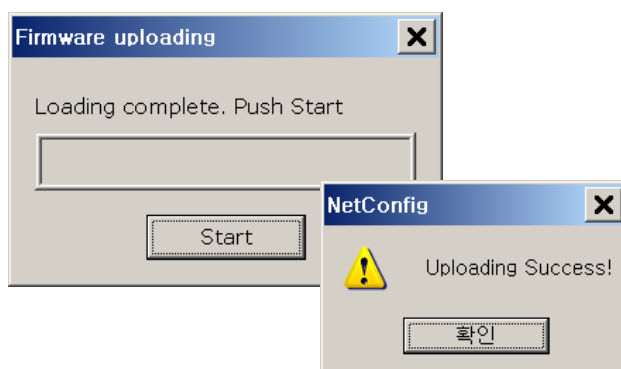
IGM7100 Test Program User's Guide



If you click "Upload" button, you can see the popup window shown below. Then you can select a file to upload.



After selecting a file, "Firmware uploading" window will be shown.



* Please be careful, if you upload odd firmware, you cannot use this upload function again.

IGM7100 Test Program User's Guide



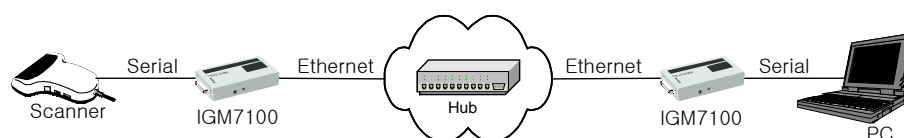
2. IGM_PCutil.exe

This program is used to test and verify Serial-to-Ethernet and Ethernet-to-Serial protocol translation function of IGM7100. Two modes (Serial or Ethernet Mode) of testing are available.

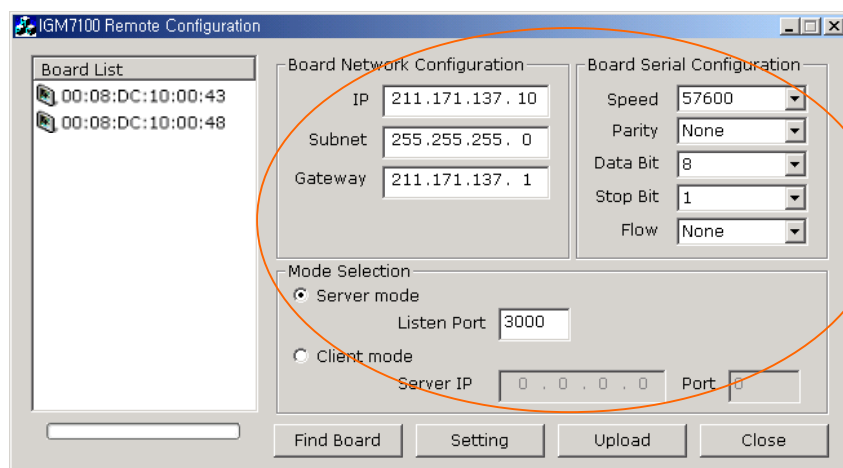
■ Serial Mode Test Procedure

This test uses two IGM7100 modules to test Serial-to-Ethernet and Ethernet-to-Serial with existing application software.

- ① Setup network as shown below.

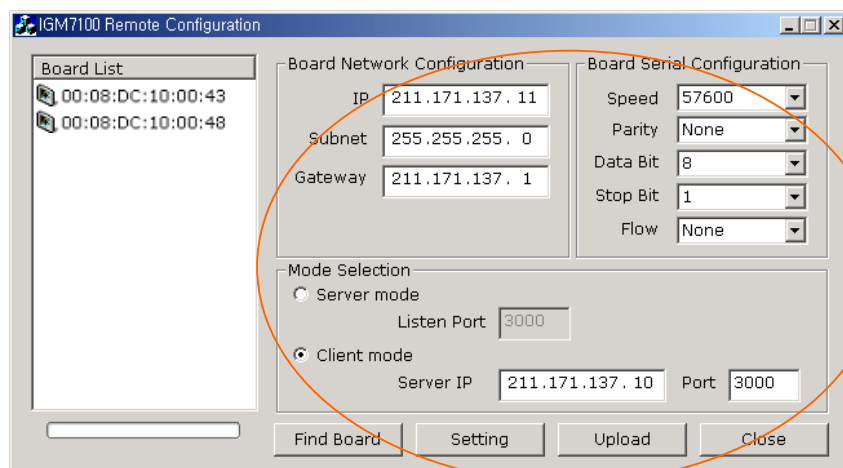


- ② Turn on power for two IGM7100s.
- ③ Run IGM_Cfgtool.exe from the PC. And follow below procedure to setting up two IGM7100's network configuration as Server and Client.
 - a. First, Click "Find Board", then two MAC addresses will be shown in "Board List" window. Select one MAC address and input network information as following picture. Then, click "Setting" button. (Server mode setting)

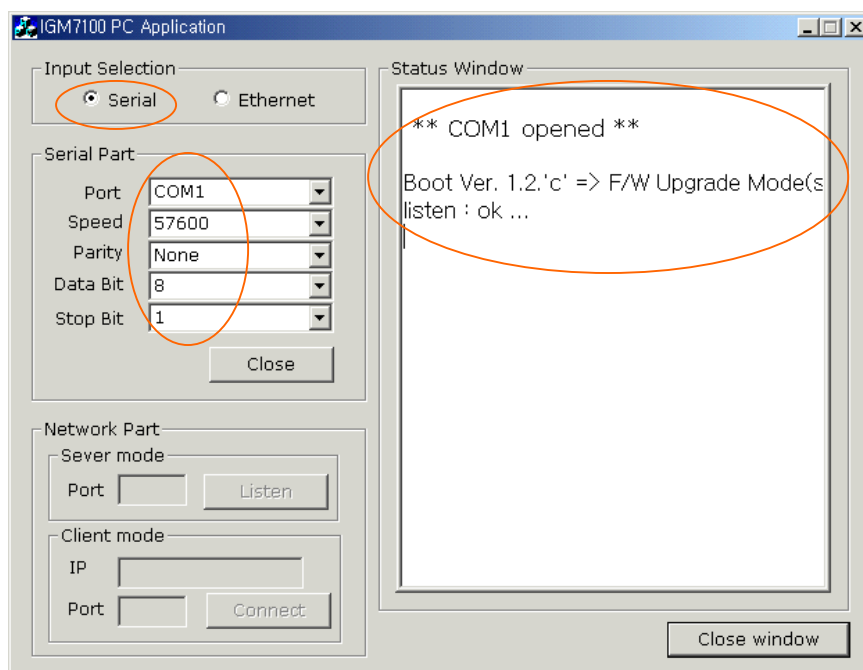


- b. Second, Select the other MAC address and input network information as following picture. Then, click "Setting" button. (Client mode setting)

IGM7100 Test Program User's Guide



- ④ Run IGM_PCUtil.exe from the PC. And from **Input Selection**, select “Serial”.
- ⑤ Under **Serial Part**, select COM1 for **Port**, Set **Speed** to 57600 (default speed), then click “Open”.
- ⑥ The Boot message from IGM7100 will display on **Status Window** as shown below.



- ⑦ Use the Barcode reader connected to the other IGM7100 to scan. The value of the Barcode will display on **Status Window** to confirm proper operation.

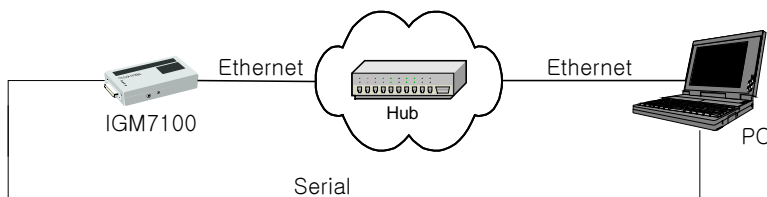
IGM7100 Test Program User's Guide



■ Ethernet Mode Test Procedure

This test uses single IGM7100 to test Serial-to-Ethernet and Ethernet-to-Serial functions.

- ① Setup network as shown below, then Turn on IGM7100 and run IGM_PCutil.exe twice from the PC. One is for Serial mode, the other is for Ethernet mode.



- ② Set one application window to Serial Mode (See ④ and ⑤ under Serial Mode for setting information) as shown below on the left. From the other application window, select "Ethernet" from **Input Selection** as shown below on the right.
- ③ Enter IP address and port number under **Network Part, Client Mode** as shown below on the right. (Refer to "Setting" of IGM_Cfgtool.exe)
- ④ Type any text into **Status Window** from either application window, and press Enter. The entered text will display on **Status window** of the other application window to confirm proper operation.

