
WebCAMi386 User's Guide

Table of Contents

1. Component
2. How to configure hardware
3. How to install firmware
4. How to install PC Application
5. How to use
6. FAQ

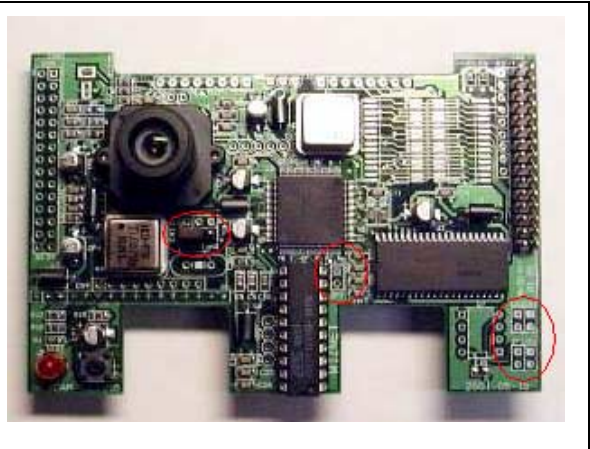
1. Component

Item	Quantity	Remarks
386EVB	1	Rev 1.3
WebCAM Board	1	Rev 2.0
UTP Cable	1	Cross Cable
Serial Cable	1	Cross Cable
30 pin Connector	1	2(line)*15(pin) Connector
9V Adapter	1	Power Adapter
CD	1	Remote Controller CD

2. How to configure hardware?

① Configure WebCAM Board's Jumper

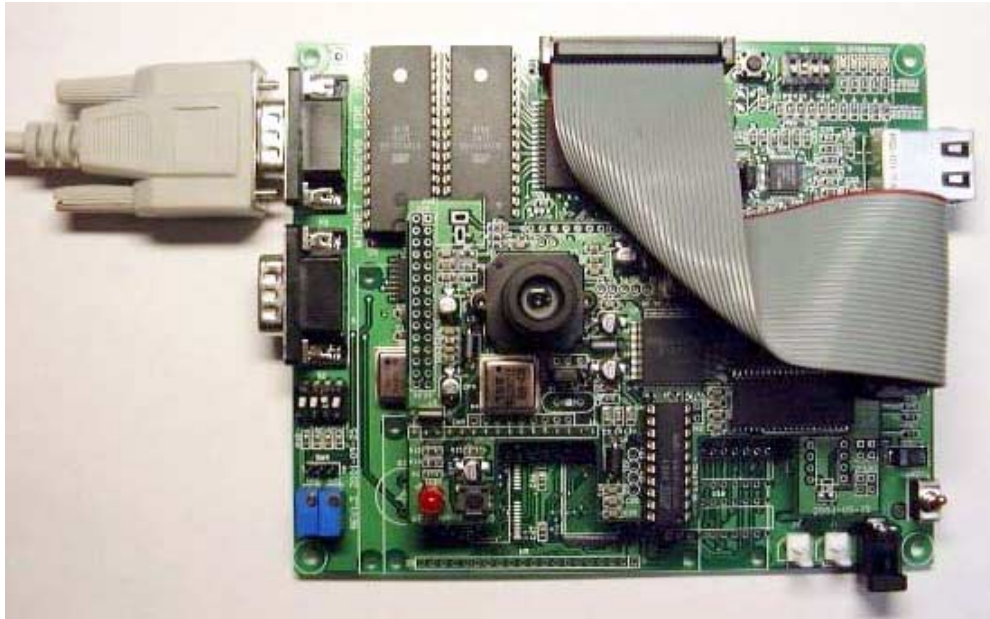
	Pin No.		
JP1	Open	X	
JP2	Open	X	
JP3	Open	X	
CN1	Open	X	
CN2	Open	X	
CN3	1	2	3
CN4	Open		



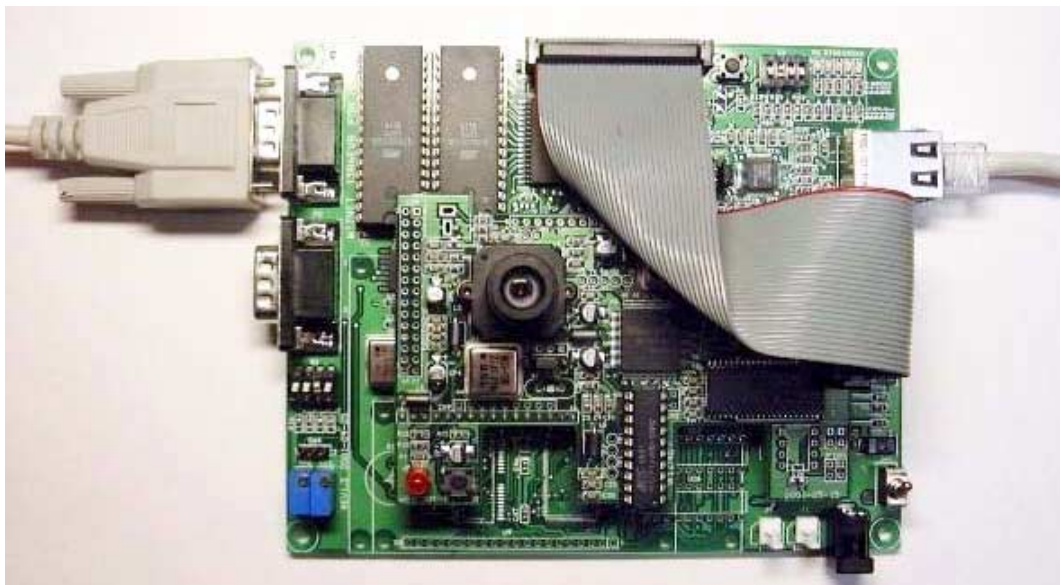
② Connect WebCAM Board's **CN6** to 386EVB's **CN1** by 30pin connector.
Connect WebCAM Board's **CN9** to 386EVB's **U8**.



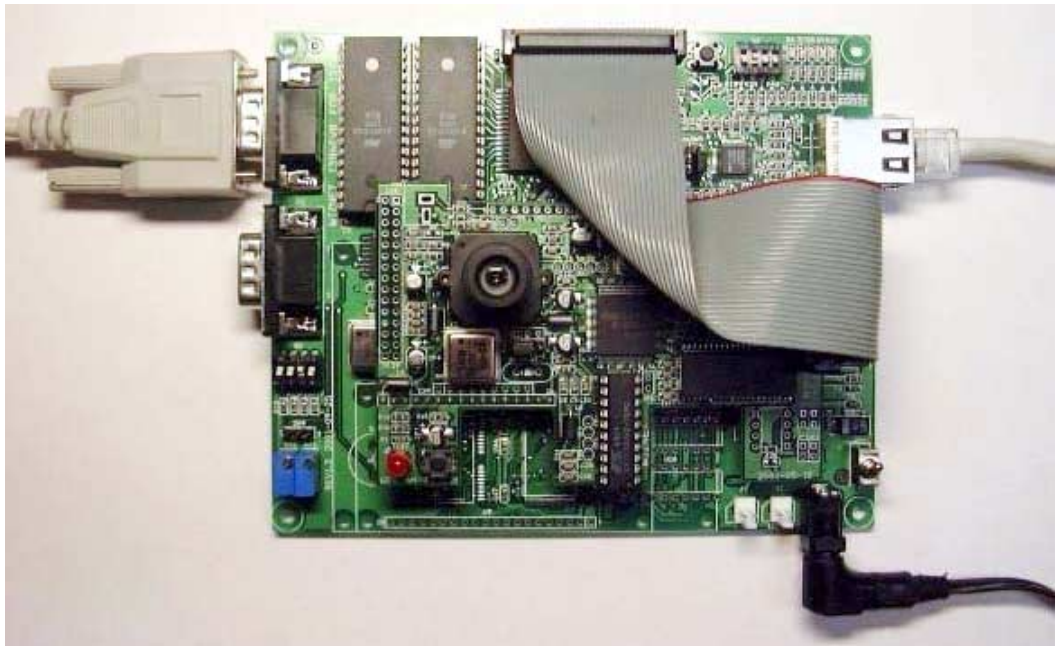
- ③ Connect i386EVB's P1 to PC with Serial Cable.



- ④ Connect 386EVB's U18 to PC's NIC(Network Interface Card,LAN card) with UTP cable(Cross cable)



- ⑤ Connect 9V Adapter to 386EVB's J2.



3. How to install Firmware?

- ① How to write for WebCAM Board's PAL
 - A. Connect ROM writer and then execute ROM writing program.
 - B. Select ATMEL as PLD's provider and select ATF16V8B/BQ as part number.
 - C. Separate PAL in Webcam Board and plug it in ROM writer.
 - D. Select WpalWWebCAM_module.jed in CD and Load.
 - E. Write it on the PAL.
 - F. Plug written PAL in WebCAM Board.

- ② ROM Version (In case that there is a ROM Writer)
 - A. Connect ROM writer and execute ROM writing program.
 - B. Select ATMEL as Flash memory's provider and select AT29C010A as part number.
 - C. Separate U5(Flash memory) from 386EVB and plug it in ROM writer.
 - D. Select WSoftwareWBoardWFlashWMon_httpdWi386bios.img in CD and Load it as BIN.
 - E. Write it on the Flash.
 - F. Plug written Flash to 386EVB's U5.
 - G. Put a cap on 1 of S1 on 386EVB.
 - H. Execute Null Modem Program on PC and Set as 4.②.
 - I. Turn on the 386EVB(S2).
 - J. Press the SW3 reset button of i386EVB
 - K. Put capital "S on Monitor program(of Null Modem on PC) and select "Text file send" in Hyper Terminal.
 - L. Select WSoftwareWBoardWFlashWMon_httpdWEVBInfo.bin in CD and Download it.

(⁴⁻⁸ On usual, Step ①, ② are supported as it's set.)

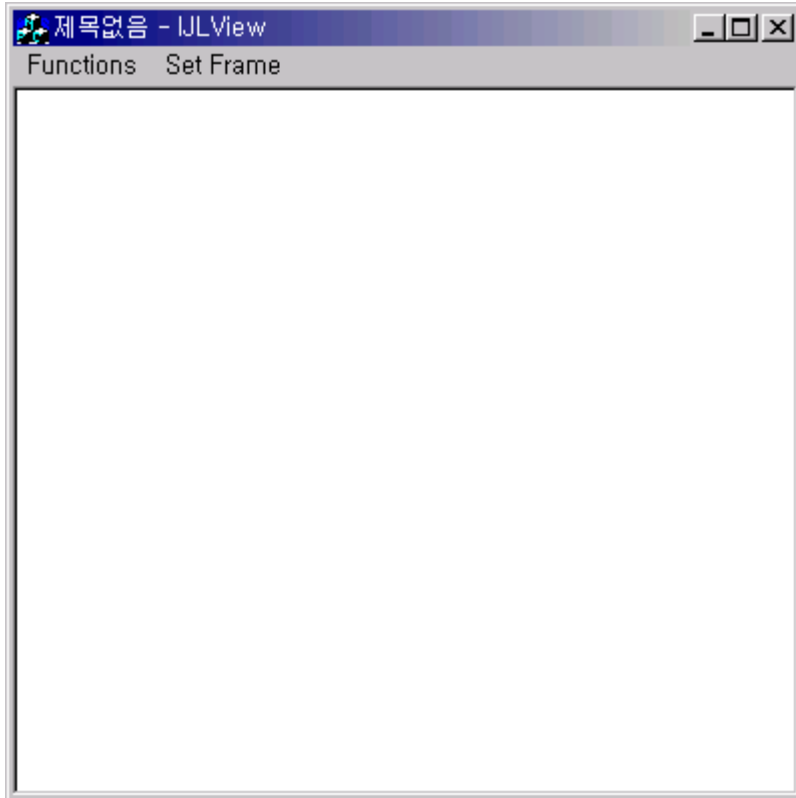
4. How to install PC Application?

- ① How to install IJLView Application
 - A. Double-click WSoftwareWPCWWebcamWwebcam.exe file in CD.
 - B. Set path to install program and click next.
 - C. Set group and click next.
 - D. Start to install.

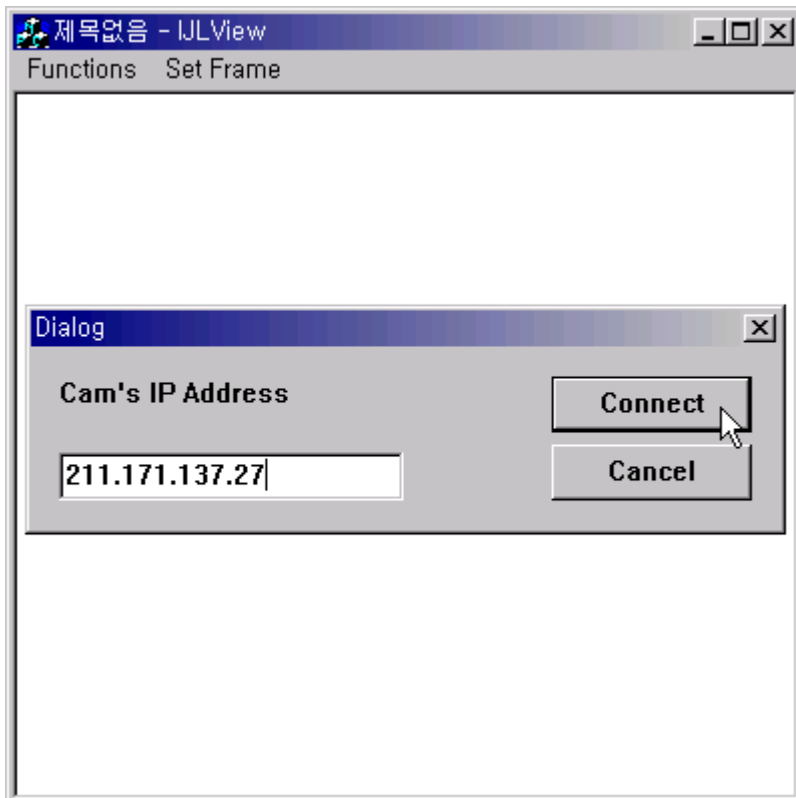
- ② How to set Null Modem program
 - A. Execute Hyper Terminal on PC. set name to connect optional and click next.
 - B. Select COM Port connected into PC in Null Modem and click next.
 - C. Set as follows.
 - bit/sec:56000
 - Data bit:8
 - Parity:None
 - Stop bit:1
 - Flow control:None

5. How to use?

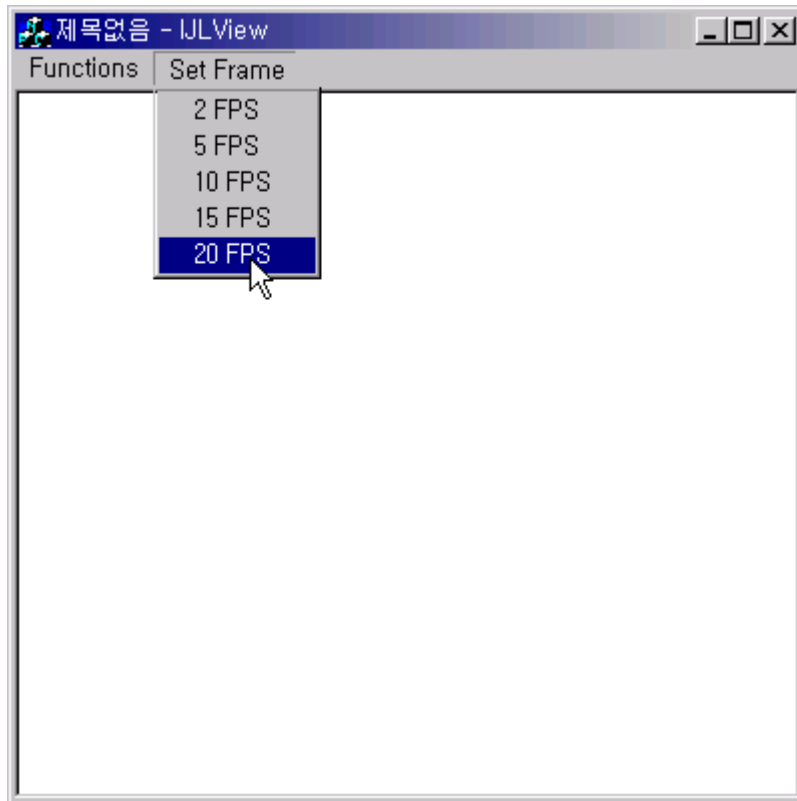
- ① After step 2. 3. 4 , run IJLView program on PC.



- ② Select "Connect" in Functions Tap and input "211.171.137.27", click "Connect" button.



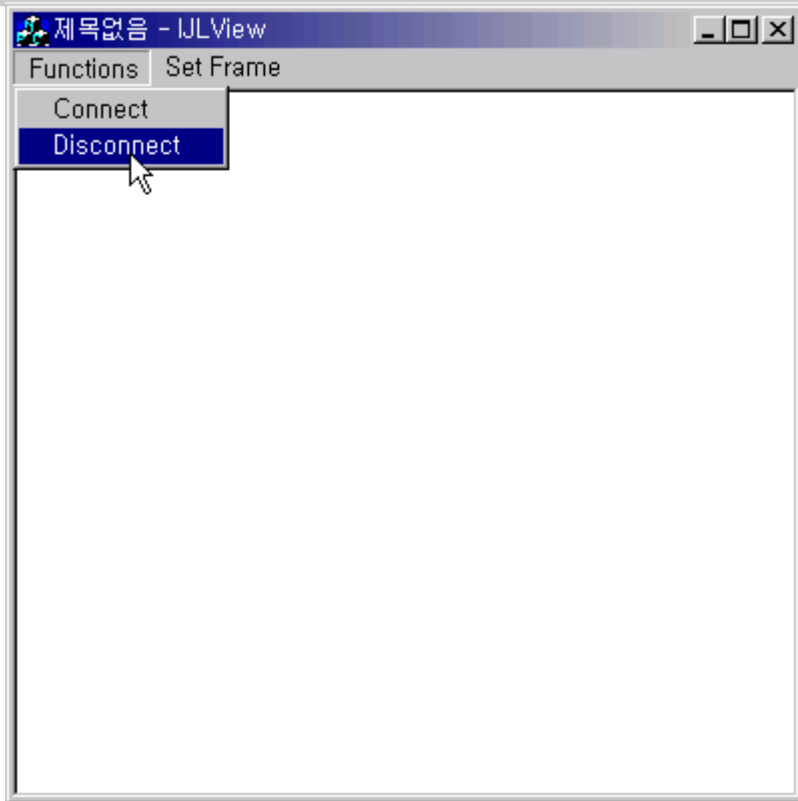
- ③ Select Frame number in Set Frame Tap.



- ④ Through image on IJLView Program, test WebCAM.



- ⑤ To finish test, select "Disconnect" in Functions Tap.



6. FAQ

- ① Timeout occurs on Ping execution for testing Ethernet connection.
 - > Check whether the UTP cable is correctly connected to U11.
 - > Provided UTP cable is cross cable for direct connection. So you cannot use it for connecting to Hub. Instead of it, please use normal UTP cable.
 - > If above all two steps are correct, turn on the 3rd switch(duplex) of S3 in i386EVB.

- ② There is no image in IJLView program's window.
 - > Check the Jumper in WebCAM board.
 - > Must be "On" 4th switch in 386EVB's S1. Please check S1 Switch.
 - > If Jumper's configuration is correct, reset WebCAM board first and reset 386EVB.And then check it again.

- ③ Occurs error message, "Fail to Getting JPEG. Operation will be stopped" after select Set Frame in IJLView program.
 - > When you connect IJLView, please check IP address is same as "211.171.137.27".
 - > Reset WebCAM board first and reset 386EVB.And then check it again.